



First Floor

- Gymnasium
- Offices
- Cafeteria
- Classrooms
- Courtyard



Second Floor

- Media Center
- Classrooms

**Ardenwald Elem
December 2007**



SITE LEGEND

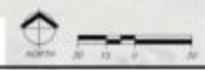
- RECTANGULAR ASPHALT WITH CURBING
- RECTANGULAR ASPHALT PARKING WITH PAINTED LANES
- SPECIAL PAVING
- CONCRETE SIDEWALK
- SOFT PLAY: MULTI-PLAY SURFACE, PLAY EQUIPMENT AND FLUSH CURB
- CONCRETE CURB AT PERIMETER OF PARKING LOTS
- FLUSH CONCRETE CURB AT PARKING ISLANDS
- 12" WITH FLUSH CONCRETE FRAME BAND AT PERIMETER OF PLAY AREA
- CONCRETE CURB WHEEL TYPICAL AT VEHICULAR ENTRIES
- CONCRETE CURB RAMP
- CONCRETE SAWNALK: 24" WITH 12" HEIGHT
- WOOD BENCHES: 24" WITH 12" HEIGHT
- COURTYARD PLANTING
- METAL KEEP ONE BACK TO TOOL
- 8-FOOT BENCH: METAL FRAME AND RECLINED WOOD SEAT SLATS
- PICNIC TABLE: METAL FRAME AND RECLINED WOOD SEAT SLATS
- 6'-0" HEIGHT CHAIN LINK BALL PROTECTION FENCE
- 6'-0" HEIGHT CHAIN LINK FENCE WITH GATES AS REQUIRED
- 4'-0" HEIGHT CHAIN LINK FENCE WITH PRIVACY SCREEN AT PLAY AREA
- GATE TO MATCH METAL FENCE

PLANTING AND IRRIGATION LEGEND

- WATER QUALITY PLANTING: STORM WATER RETENTION WITH TEMPORARY IRRIGATION SYSTEM FOR ESTABLISHMENT
- LAWN
- SHADE AND DROUGHT-TOLERANT PLANTING AREAS WITH PERMANENT IRRIGATION SYSTEM
- COLUMNAR TREE
- DECIDUOUS FLOWERING TREE
- DECIDUOUS UPRIGHT FLOWERING SMALL TREE: ORNAMENTAL DOGWOOD OR SIMILAR
- NATIVE / ADAPTIVE TREES
- LARGE SHADE TREE
- EXISTING TREE TO BE PRESERVED: 6" DIAMETER TRUNK OR LARGER
- EXISTING TREE TO BE REMOVED: 6" DIAMETER TRUNK OR LARGER

ARDENWALD SCHOOL

Landscape Site Plan



WALKER·MACY

NOVEMBER 19, 2007